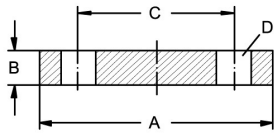
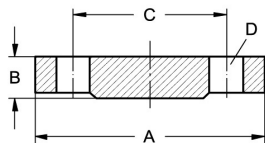


Welding neck flanges EN 1092-1

Art.No	EUR	Art.No	EUR
--------	-----	--------	-----

Blind flange DIN 2527, form B, ND 40


DN	A	B	C	D		AISI316L-1.4435	AISI316Ti-1.4571
10	90	16	60	4xM12x55		467330-B Enquiry	464430-B Enquiry
15	95	16	65	4xM12x55		467331-B Enquiry	464431-B Enquiry
20	105	18	75	4xM12x55		467332-B Enquiry	464432-B Enquiry
25	115	18	85	4xM12x55		467333-B Enquiry	464433-B Enquiry
32	140	18	100	4xM16x65		467334-B Enquiry	464434-B Enquiry
40	150	18	110	4xM16x65		467335-B Enquiry	464435-B Enquiry
50	165	20	125	4xM16x75		467336-B Enquiry	464436-B Enquiry
65	185	22	145	8xM16x75		467337-B Enquiry	464437-B Enquiry
80	200	24	160	8xM16x75		467338-B Enquiry	464438-B Enquiry
100	235	24	190	8xM20x80		467339-B Enquiry	464439-B Enquiry
125	270	26	220	8xM24x90		467341-B Enquiry	464441-B Enquiry
150	300	28	250	8xM24x90		467342-B Enquiry	464442-B Enquiry
200	375	34	320	12xM27x110		467344-B Enquiry	464444-B Enquiry
250	450	38	385	12xM30x120		467346-B Enquiry	464446-B Enquiry
300	515	42	450	16xM30x120		467348-B Enquiry	464448-B Enquiry

Blind flange DIN 2527, form C, ND 40


DN	A	B	C	D		AISI316L-1.4435	AISI316Ti-1.4571
10	90	16	60	4xM12x55		467330-C Enquiry	464430-C Enquiry
15	95	16	65	4xM12x55		467331-C Enquiry	464431-C Enquiry
20	105	18	75	4xM12x55		467332-C Enquiry	464432-C Enquiry
25	115	18	85	4xM12x55		467333-C Enquiry	464433-C Enquiry
32	140	18	100	4xM16x65		467334-C Enquiry	464434-C Enquiry
40	150	18	110	4xM16x65		467335-C Enquiry	464435-C Enquiry
50	165	20	125	4xM16x75		467336-C Enquiry	464436-C Enquiry
65	185	22	145	8xM16x75		467337-C Enquiry	464437-C Enquiry
80	200	24	160	8xM16x75		467338-C Enquiry	464438-C Enquiry
100	235	24	190	8xM20x80		467339-C Enquiry	464439-C Enquiry
125	270	26	220	8xM24x90		467341-C Enquiry	464441-C Enquiry
150	300	28	250	8xM24x90		467342-C Enquiry	464442-C Enquiry
200	375	34	320	12xM27x110		467344-C Enquiry	464444-C Enquiry
250	450	38	385	12xM30x120		467346-C Enquiry	464446-C Enquiry
300	515	42	450	16xM30x120		467348-C Enquiry	464448-C Enquiry